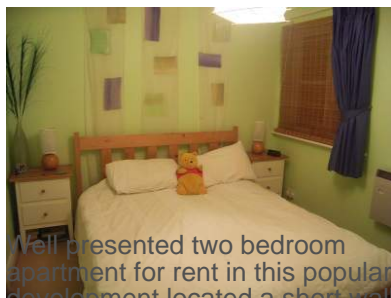


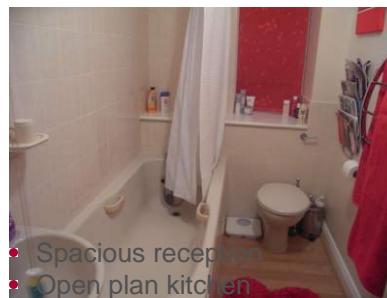


St Josephs Vale,
Blackheath, SE3

£1,200 per month



Well presented two bedroom apartment for rent in this popular development located a short walk from the Village.



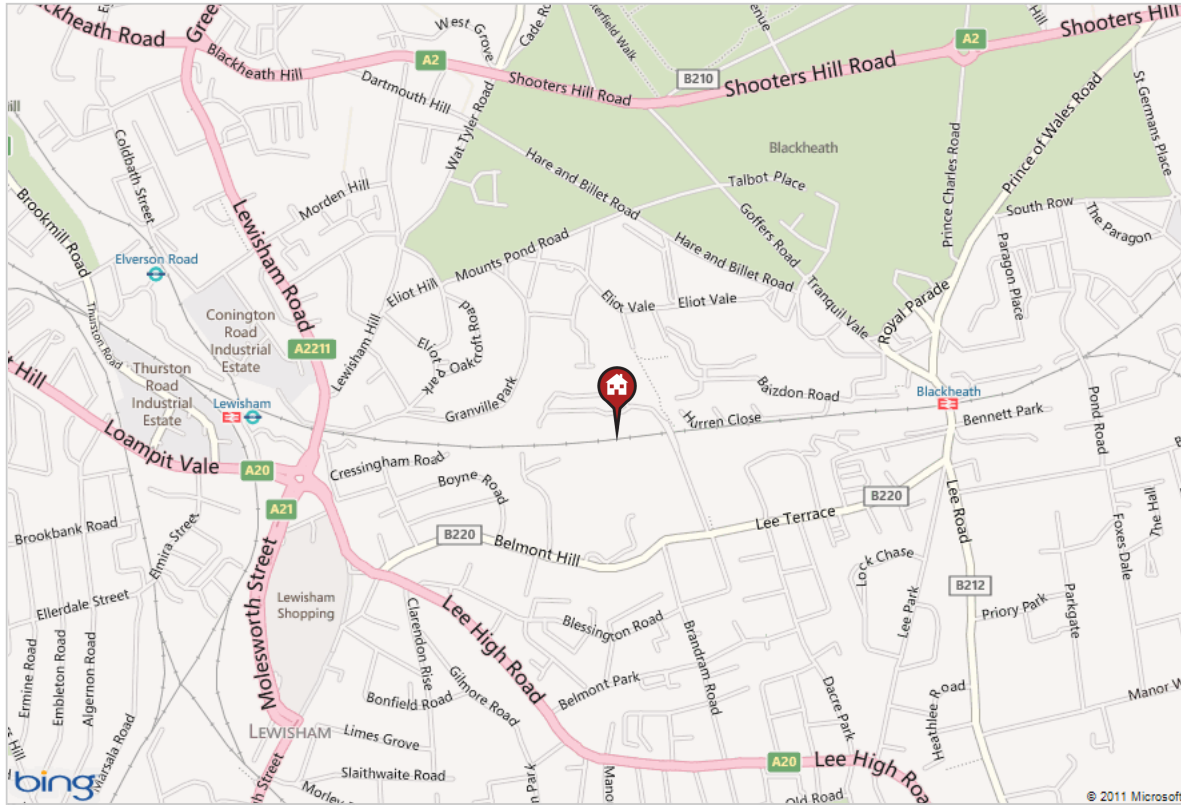
- Spacious reception
- Open plan kitchen
- Off street parking
- Neutral decor
- Juliette balcony
- Furnished

Blackheath Office
25-27 Montpelier Vale
Blackheath SE3 0TJ

Sales
Tel 020 3280 3506
Fax 020 8297 5254
Email sbl@kfh.co.uk

Lettings
Tel 020 3280 3507
Fax 020 8297 5254
Email lbl@kfh.co.uk

St Josephs Vale Blackheath, SE3



Price
£1,200 per month

Viewing
Strictly by appointment with Kinleigh Folkard & Hayward
Blackheath office 020 3280 3507

Reference
18771

Whilst every effort is made to ensure the accuracy of these details, it should be noted that the above measurements are approximate only. Floorplans are for representation purposes only and prepared according to the RICS Code of Measuring Practice by our floorplan provider. Therefore, the layout of doors, windows and rooms are approximate and should be regarded as such by any prospective purchaser. Any internal photographs are intended as a guide only and it should not be assumed that any of the furniture/fittings are included in any sale. Where shown, details of lease, ground rent and service charge are provided by the vendor and their accuracy cannot be guaranteed, as the information may not have been verified and further checks should be made either through your solicitor/conveyancer or by referring to the home information pack for this property. Where appliances, including central heating, are mentioned, it cannot be assumed that they are in working order, as they have not been tested. Please also note that wiring, plumbing and drains have not been checked.